



Weobley Theatre Goers

I have reserved seats for something a little different this Christmas – an ice show, **Cirque de Glace**, at Malvern on Wednesday 3 December, **leaving Bell Square at the earlier time of 12.00 noon.** This show will combine the 'Olympic standard skating of the Russian Ice Stars, with aerial acrobatics and extraordinary circus performances.' I have reserved seats in the Forum Theatre in the first few rows of the balcony. Cost is £25 **but please be quick – I need to book this by the second week in November, so cheques to me by November 3. please.**
Kate Best - 01544 318513

PARISH COUNCIL REPORT

Retention of a Post Office 'Hosted' Service in the village

The consultation period closed on 7th October, and at this moment in time we are waiting to learn the outcome of Post Office Limited's decision. Thank you to all those residents who took the trouble to write to Post Office Ltd. in support.

Parish Freighter Service for 2008 – Rubbish Removal

One further Saturday date has been arranged for the Freighter and small box van to be present at the Parish Hall during 2008. Any unwanted white goods or items of furniture can be collected, as well as general household rubbish (no hazardous materials please) :-

Saturday 8th November between **8am and 10 am**
PLEASE NOTE EARLIER TIME

Sandbags Available

If you require the use of any sandbags to prevent water damage in case of flooding, please contact Tony Norman who keeps the stock of sandbags. Tel: 388305

Broxwood BT Red Telephone Kiosk

BT are allowing parish councils to 'Adopt' certain telephone kiosks which have been relatively underused; alternatively they would be removed from the site by BT. This Parish Council has agreed to Adopt the Broxwood phone kiosk; but it is on the understanding that **the telephone handset and associated telephony equipment will be removed entirely**, so the kiosk will be retained purely as an attractive local feature. The telephone kiosk in Pembridge village will be retained with a functioning telephone in it.

The next Parish Council Meeting will be on Wed. 19 November
All are welcome

[Please address any inquiries to the Clerk:](#)
[Mrs. Heather Harding, 153 Bargates, Leominster. HR6 8QT](#)
[Tel: 01568 612143](#)

Editor : Glyn Whiting tel: 01544 388497 email : glynwhiting@tiscali.co.uk **Publication deadline : Dec15th 2008**
www.pembridgeamenitytrust.co.uk www.pembridgeparishcouncil.gov.uk www.pembridgechurch.org.uk

NB : the views expressed by contributors are those of the authors and not those of the editor. View expressed in editorials are not necessarily those of the Parish Council

2009
Pembridge Flower Festival
May 22nd to 25th



Please help!

We need volunteers and contributions for all the stalls.....

Making items of craft, home baking / producing jams or preserves, offers of plants, being part of the rota for running the stalls, etc...

To offer your help or for more information please ring
Liz-01544 388 306
Teresa - 01544 388 457
Jen- 01544 388 034

Pembridge Surgery

Tel: 01544 388566 Fax: 388567

Doctor

9:20 - 11:30 Mon
15:30 - 17:30 Mon & Thur
9:00 - 11:30 Tue & Fri
8:30 - 11:30 Wed

Nurse

9:00 - 12:00 Mon & Wed
14:00 - 16:30 Wed

Emergency doctor

Mon - Fri, 8:00 - 18:00, call Kington Surgery on 01544 230302
Outside these hours call PRIMECARE on 0845 600 8182

W.I. NEWS

Meetings, unless otherwise stated are held in Pembridge village hall at 7.30 p.m.

on the second Wednesday of each month.

Visitors are welcome and can contact the secretary,

Dianne Davis (01544388399) for further details



Pembridge Parish News

November December 2008

A Parish Council information service for the people of Pembridge

www.pembridgeparishcouncil.gov.uk

EDITORIAL

So Autumn, like a grumpy teenager, tosses the baton at winter's feet. He wearily picks it up, pulling his cloak of twigs and leaves around him and trudges off. It will be a while until he sees the happy face of spring waving in the distance. (I'm wasted as a painter). It's great to see the bonfire night back on the agenda and the harvest supper in the village hall continues to be a good night.

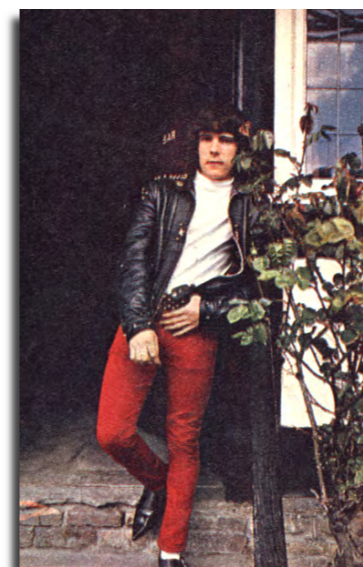
There is a Christmas floral demonstration coming up in December and the festival in May sounds like a very good idea.

So, a mixed year then. The main cloud being the post office closure. The council have done their best but it's very hard once central government have made up their mind (and I'm sure they have). A sliver of hope with the discussion period but I wouldn't be putting any money on it!

I'm writing this on my notebook in Spain. The swallows are still here on their way south and a flock of egrets are studying a patch of long grass on the other side of the orange grove. Which brings me to apologise if you sent an item and I have not included it. I failed to transfer all the information from my main pc so may be missing some information. This is the trouble with volunteers, no commitment! As they say, if you pay peanuts you get monkeys! Anyway, I will put them in next time if it's not too late. Yes, I am working too and have completed 9 new paintings ready for Christmas.

And that's just around the corner, so I trust you all have a good end to 2008, a lovely Christmas and I hope to find you reading the next issue in January.

Glyn



Ahh!! The youth of 1966

I'm sure you will let me know who this fine Upstanding fellow is! Could that be the door of the New Inn?

BONFIRE NIGHT !!!



On November 5th there will be a bonfire party held on the millennium meadow. There will be an **organised firework display** (for reasons of safety don't bring your own), Families and children are invited to enter **the Guy competition**, these will be judged at 7pm and the fire lit at 7.30. If desired the guys can then be thrown on the bonfire after judging.
There will be food and drinks and a raffle. Everyone welcome.

HARVEST SUPPER



15TH NOVEMBER
7.30PM
Pembridge Village Hall
£5.00 per ticket.

Tickets available from Village Shop.
Proceeds to St Marys Church.



Arrests of Note

Male 38 charged with harassment, threats to kill and carrying an offensive weapon.
 Male 38 charged with drink driving.
 Female 43 charged with drink driving.
 Male 47 cautioned for criminal damage

Theft – Near Dilwyn

Theft of two transformers from a sub power station in Lower Chadnor sometime between 16:00hrs on 7th October and 11:30hrs 8th October. Gates were taken off their hinges to gain access.

Suspicious Incident – Lyonshall

Sometime between 08:20hrs and 09:05hrs on 9th October person or persons unknown have entered the garden of a property in Lyonshall, entered an insecure garage and unplugged the power to a pond pump. The pond contained Koi Carp. Believe that an attempt to steal the fish or fishing equipment may have been made

Thefts from Farms

Please be aware that thieves are targeting rural farms for such items due to the ever increasing price for scrap metal. Be vigilant when checking your land and neighbouring property borders. If you have scrap metal dealers touting on your land, take the registration number of the vehicle and call us as soon as possible. Even if you think they are reputable dealers.

DO NOT leave scrap metal lying around your property for all to see, secure it in a lockable unit away from prying eyes. Where possible, invert hinges so gates can not be lifted off. Padlock gates when not in use. Chain gates and gate posts together, especially on gates that are not used on a regular basis, this gives a visual deterrent to unwanted visitors. If you are able, visually check your whole property at the start/end of each day. **Don't make it easy for the thieves.**

IF YOU HAVE ANY INFORMATION REGARDING THE ABOVE YOU CAN CONTACT YOUR LOCAL POLICING TEAM ON:

08457 444 888 EXT: 4535
 KINGTON RURAL LINE - 01432 346711
 PC SHARON WILSON – 07977098394
 PCSO DONNA JONES - 07970602340.

PLEASE BE AWARE THAT THE INFORMATION WE PROVIDE IS TO ASK FOR YOUR ASSISTANCE. WE DO NOT WANT IT TO WORRY YOU IN ANY WAY. THESE INCIDENTS ARE INFREQUENT AND SPREAD ABOUT A WIDE AREA. WE ARE LIVING IN A VERY PLEASANT AND PEACEFUL AREA.

IF REPORTING ANY INCIDENTS THAT NEEDS AN IMMEDIATE POLICE RESPONSE THEN DIAL 08457 444 888 (OR FOR AN EMERGENCY DIAL 999.)

PLEASE DO NOT CONTACT THE LOCAL POLICING OFFICER DIRECT FOR THIS SERVICE.

www.westmercia.police.uk

KINGSPAN PEMBRIDGE NEWSLETTER

LADY HAWKINS

PUPILS HAVE NEW EXPERIENCES



By the time you read this, pupils from Lady Hawkins School will have been looking at the issue of sustainability in a whole new way. On 14th October the Year 7 pupils from the school attended an exciting educational production,

“SPeAR – The Experience”, at Hereford’s Courtyard Theatre.

SPeAR – The Experience’ is a theatrical performance bringing into life in dynamic fashion the issues and choices we all face in ensuring a future for our planet and provides triggers for everyone to think and act differently. It is hoped that engaging young people in this way will leave a strong impression of the consequences of their actions upon the world. The show which is in its second year, took place between October 13th and 16th at the Courtyard and all Year 7 pupils in the Herefordshire area were invited to attend the performance free of charge. Kevin Smith of Lady Hawkins School indicated that following last year’s successful performance, the school was delighted to be invited to attend this year and it once again proved to be a great educational and fun event for the students. Kingspan Insulation was instrumental in the creation of SPeAR – The Experience’, providing the vast majority of the funding for the show. Community involvement is just as important to Kingspan Insulation as the issue of sustainability, and during the last year they have been able to help the students at Lady Hawkins in a number of ways through the Kingspan Insulation Community Trust. Following successful applications to the Trust, pupils at the school have now received a variety of new sports equipment, ranging from monitoring equipment which allows a much more focused approach to health and fitness, to the purchase of brand new high jump equipment which has resulted in a popular new athletic sport amongst the pupils. Kingspan Insulation has also contributed to the schools Eco-classroom, which will be used as a vehicle to promote sustainable living, not only as a resource for the school but for the wider community as well. You may be educating your children now from your experience in life, but with all the extra knowledge they are gathering on the importance of keeping themselves and their planet healthy, they may soon be teaching you a thing or two!

VILLAGE CHRISTMAS TREE DISPLAY



Plans are well underway for the Christmas trees in the village this year. I have found a few new places for so extra trees, extending our display and gaps. Please may I ask if anyone who had a tree last year and doesn’t want one this year would they let me know as there are over thirty this time and it would take most of a day visiting everyone to check. I have obtained quotes for the trees. The team who collect them, put them in their pots, deliver them to the houses, tie them safely and put on their lights are prepared to do the same this year, I would like to thank them in advance and the Christmas tree hosts. If there is anyone who would like a tree let me know in case there are any spare. Otherwise if you would like to join in and add your own I would be very grateful as it would add to the display. I am arranging for an official turning on of the Christmas tree lights in the market hall on December 5th at 6pm. There will be some stalls, cakes, Christmas goodies and others. There will be drinks and food and hopefully other things yet to be arranged. Father Christmas will make an early visit in time for the children to give him their requests for Christmas. Please join in wherever you live in the parish and make this a happy event.
Julie Mifflin, tel. 388414

HEREFORDSHIRE COUNCILLORS REPORT



Pembridge Post Office

Can I thank all those people who replied to the consultation process on retaining a hosted one hour service in the Stepps existing shop. Herefordshire Council, our local MP and myself have also written and we await their conclusions.

Local Primary Schools

I have attended a meeting of all the Heads and Chairmen of Governors of the primary schools in the Lady Hawkins school cluster. You will recall the government’s push to local authorities to reduce surplus places in the primary sector. Although the Government have now pulled back from this we examined the figures for our local schools. In our cluster there are no projected surplus places due partly to the closure of Brilley school in 2007. There is a culture of co-operation and collaboration between our schools which as funding gets tighter is a good background to share resources and staff to maintain the high standards of education we have.

At Pembridge School the first and largest phase of rebuilding has been completed with the addition of a superb performance hall. There are plans for an official opening and open day for all residents and I urge you to go and see the wonderful facilities and good work of our children.

Cllr Roger Phillips
 01432260046/01544340269

NEW RIVER ARROW FLOOD WARNING SCHEME FOR PEMBRIDGE

This has just been introduced by the Environment Agency.

The height of the River Arrow can now be automatically measured at Titley Mill and can trigger the following warning codes:

- .75 metre rise would initiate a ‘flood watch’
- 1.4 metre rise would initiate a ‘flood warning’ and eventually an ‘all clear’ would be sent which means that no further flooding is expected.

Residents of homes which lie within the recognised flood area will receive a leaflet by mail very soon, advising on how to protect your homes, and how to register to receive flood warnings by telephone, mobile, E Mail, Fax or SMS Text messages.

If you do not receive this information by post, and would like to register to receive flood warning information, please telephone the **Environment Agency Floodline on**

Tel: 0845 988 1188.

Give your post code to the call operator and ask to be signed up to receive free Flood Warnings for your area. If you wish to discuss any other matter relating to local flood warnings with the Environment Agency, you may call Mr. Tito Lopez – **Flood Incident Management Officer, on: Tel: 02920 245251.**

Please visit www.environmentagency.gov.uk/floodline for more information and to view the Flood Maps

Pembridge Coffee Mornings.

The Pembridge Coffee mornings are held on the third Thursday of the month, in the Village Hall, between 10:30am and 12 noon. Coffee is free with any donations going to charity. Everyone welcome so hope to see you there.

Christmas Floral Demonstration
 Pembridge Village Hall
Tuesday December 2nd at 7.30pm

Ticket to include a glass of wine and a mince pie !
 Proceeds in aid of the Pembridge Flower Festival
 For details phone
 Jean on : 01544 388393 or
 Trish on: 01544 340340